

# The SensAble™ Dental Lab System – Flexible Partial

## THE ONLY DENTAL CAD/CAM SYSTEM TO SUPPORT THE DESIGN AND FABRICATION OF FLEXIBLE PARTIALS

By streamlining technique-sensitive processes required for producing flexible partials, SensAble's system helps you deliver a better fit in less time. Partial that not only save you time, but also save chairside time and provide a better experience for the patient.



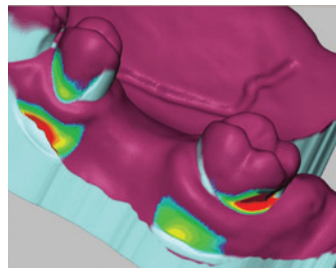
### BENEFITS

- Design accurately fitting flexible partials in a faster, easier way
- Ensure precise, consistent thickness regardless of technician
- Identify ideal retention areas more quickly using digital survey
- Fabricate in the materials of your choice
- Reduce finishing time by 50% or more

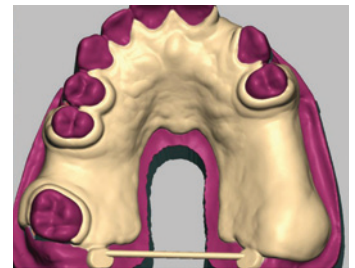
### STREAMLINED DESIGN & FABRICATION PROCESS



Use the integrated scanner and SensAble software to create an accurate 3D digital model.



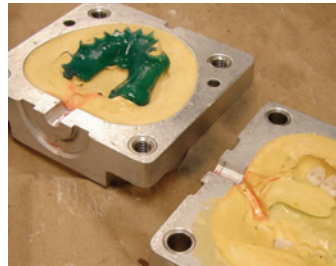
Complete your digital survey to determine the depth of undercuts for ideal retention within seconds!



Design using SensAble's virtual workbench, digital wax, and familiar tools.



Use the integrated 3D printer to produce a precise resin pattern. Place denture teeth in occlusion and set in wax.



Invest the model in the flask. Boil out the wax. Open the flask and remove resin pattern. Then inject the flexible material.



Remove the partial from the mold. Then trim, polish, and fit to the stone.

### INVEST WISELY—CHOOSE SENSABLE

SensAble is fully committed to your success, from installation through fabrication. Find out why so many labs are choosing the SensAble Dental Lab System. It's the smart choice for smart dental labs.



#### CORPORATE HEADQUARTERS

SensAble Technologies, Inc.  
15 Constitution Way  
Woburn, MA 01801 USA  
[t] +1-781-937-8315  
[f] +1-781-937-8325  
[www.sensabledental.com](http://www.sensabledental.com)

© 2009 SensAble Technologies, Inc. All rights reserved. SensAble and SensAble Technologies, Inc. are trademarks or registered trademarks of SensAble Technologies, Inc. Other brand and product names are trademarks of their respective holders. Product specifications are for v2 of the SensAble Dental Lab System and are subject to change without notice.

Images courtesy of Williams Dental Laboratory, Erie, Pennsylvania