

FLEXIBLE PARTIALS

Design Precise, Accurate-fitting Flexible Partial Faster, More Easily with the Intellifit Digital Restoration System

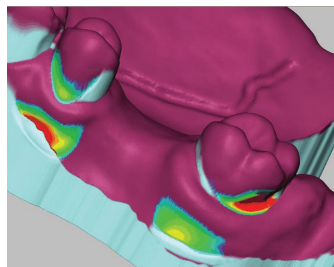
By streamlining technique-sensitive processes required for producing flexible partials, the Intellifit system helps you deliver a better fit in less time. Partial that not only save you time, but also save chairside time and provide a better experience for the patient.



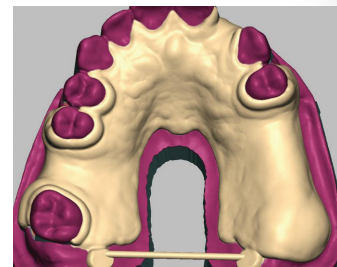
STREAMLINED DESIGN & FABRICATION PROCESS



Use the integrated scanner and Intellifit software to create an accurate 3D digital model.



Complete your digital survey to determine the depth of undercuts for ideal retention within seconds!



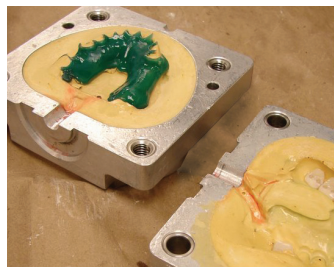
Design using Intellifit's virtual workbench, digital wax, and familiar tools.

BENEFITS

- Digitally design a baseplate in less than 5 minutes
- Ensure precise, consistent thickness regardless of technician
- Identify ideal retention areas more quickly using digital survey
- Fabricate in the materials of your choice
- Reduce finishing time by 60% or more



Use the integrated 3D printer to produce a precise resin pattern. Place denture teeth in occlusion and set in wax.



Invest the model in the flask. Boil out the wax. Open the flask and remove resin pattern. Then inject the flexible material.



Remove the partial from the mold. Then trim, polish, and fit to the stone.

Invest wisely – choose Sensable.

Sensable Dental is fully committed to your success, from installation through fabrication. Find out why so many labs are choosing the Intellifit Digital Restoration System. It's the smart choice for smart dental labs.