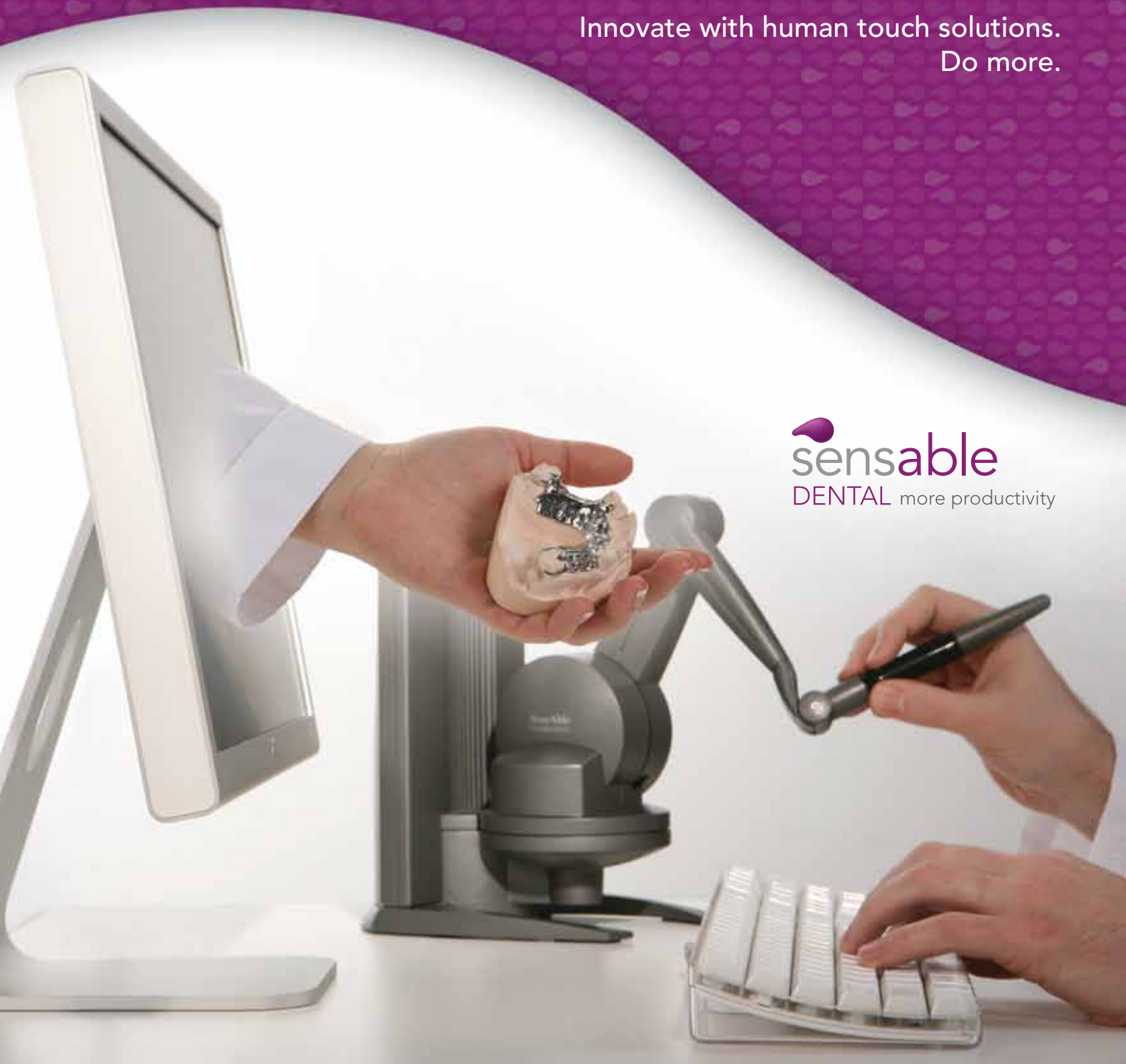


# intellifit™

## DIGITAL RESTORATION SYSTEM

Innovate with human touch solutions.  
Do more.

 **sensible**  
DENTAL more productivity



# MORE PRODUCTIVITY. MORE PROFIT.

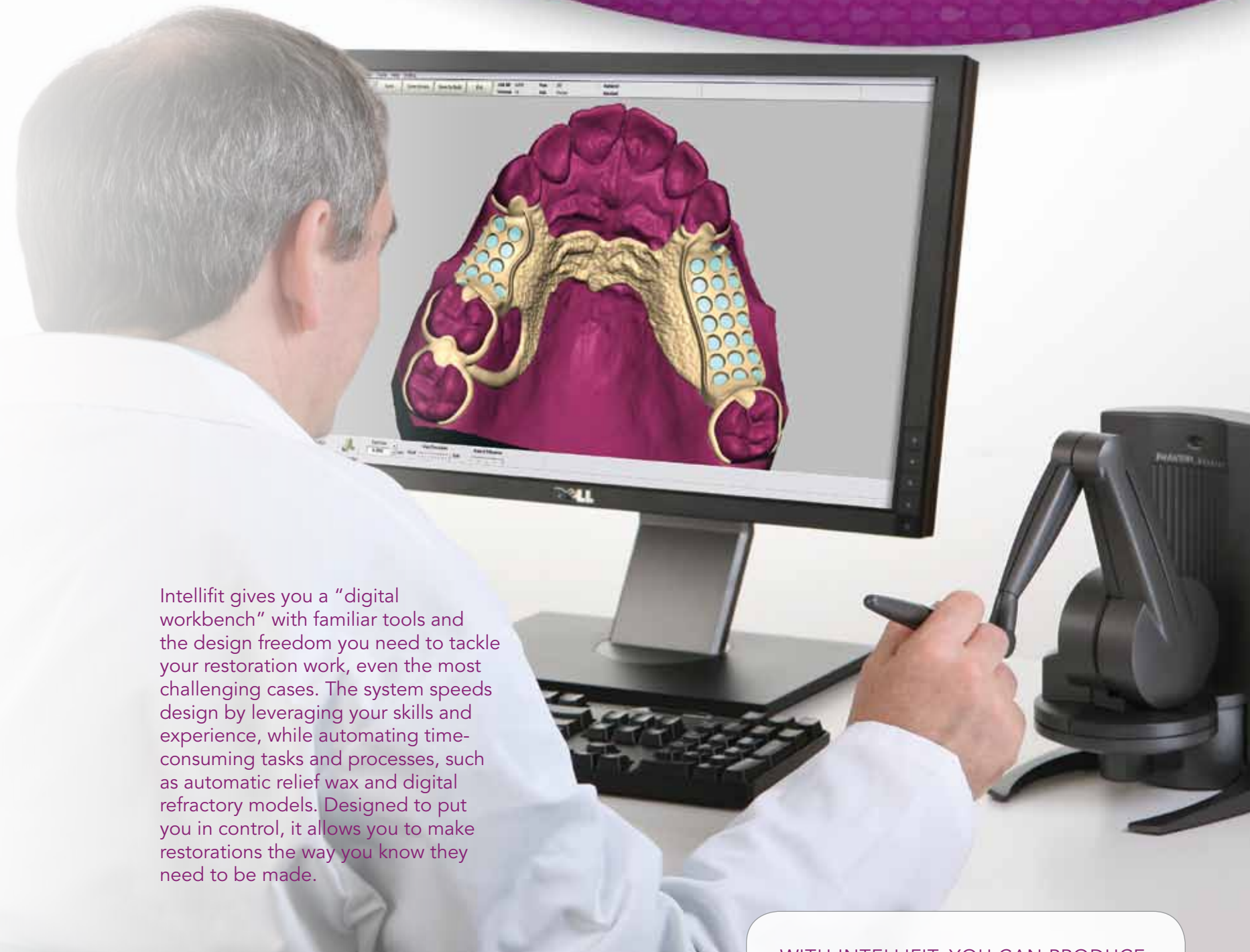
More choices – restorations, fabrication methods and materials.

Start with exceptional practicality. The Intellifit Digital Restoration System is the first and only TE (Touch Enabled) CAD/CAM solution that lets you efficiently handle the many different types of restorations you do every day – not just crowns and bridges, but also metal and flexible partials, inlays, onlays, veneers and combination cases.

And that's just the beginning. At Sensable, we understand that every minute you save goes directly to your bottom line. That's why Intellifit is the only TE CAD/CAM system that lets you design the way you always have, only digitally – so you have unmatched speed, precision and flexibility. With Intellifit, you can complete your designs and wax-ups much faster than you would conventionally, and you save significant time in finishing as well.

Intellifit also gives you the freedom to use the materials of your choice. And, whether you choose to cast, flask, press, mill, 3D print or laser sinter, with Intellifit, you can do them all!

We also know that a CAD/CAM system is only as good as the company, and the people, who stand behind it. That's why Sensable delivers a level of customer commitment and support that's unmatched in the dental lab industry – because we believe that your success is our success.



Intellifit gives you a "digital workbench" with familiar tools and the design freedom you need to tackle your restoration work, even the most challenging cases. The system speeds design by leveraging your skills and experience, while automating time-consuming tasks and processes, such as automatic relief wax and digital refractory models. Designed to put you in control, it allows you to make restorations the way you know they need to be made.

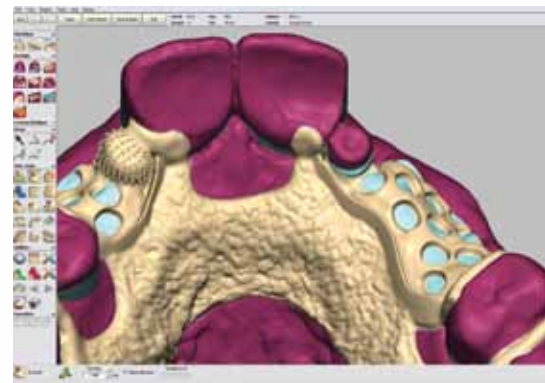
## We're Flexible – Including Try-ins

We've got the process for producing flexible partials that fit great in record time. You can even fabricate your designs in a biocompatible material – perfect for try-ins.



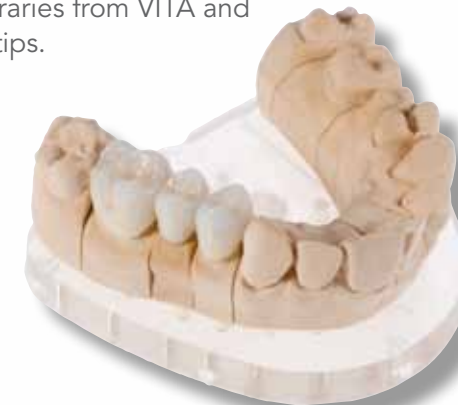
## Winning Combinations

With Intellifit, having the right digital tools to design removable and fixed restorations, including using attachments, is a given.



## Full Contour

Design substructures with the press of a button. And, overstructures, inlays and onlays, veneers as well as tooth libraries from VITA and Heraeus, are at your fingertips.



## WITH INTELLIFIT, YOU CAN PRODUCE:

- Metal & flexible partials
- Full contour crowns & bridges
- Substructures & overstructures
- Veneers
- Combination cases with attachments
- Customized designs such as obturators and nightguards

Versatility like this means a greater return on investment for your dental lab. With Intellifit, you simply get more for your money.

# TE CAD/CAM

Fast, precise, consistent, familiar – it feels just like waxing.

Intellifit's unique TE (Touch Enabled) CAD/CAM software means you can literally feel the digital wax-up you're designing on-screen. This natural and intuitive way of working, combined with our intelligent CAD software, allows you to deliver restorations made with exceptional speed, accuracy and consistency. Most of all, parts fit right the first time – and that means faster turnaround for you, your doctors and their patients.

With Intellifit, you design removable and fixed restorations just like waxing by hand, but with all the benefits of a digital system. Your design preferences can be set and stored. Presets that you define – such as restoration type (partial dentures, PFM, PoM, PoZ and monolithic) and fabrication materials and processes, along with libraries of clasp profiles and mesh and stipple patterns – make it easy to consistently deliver on each doctor's prescription. There are even step-by-step workflows to guide you. And changes, if needed, can be made with the touch of a button.



Add wax using a digital wax knife, use the smoothing tool just like an alcohol torch, and complete survey and blockout as if you were using a conventional surveyor. Intellifit's tools just make sense.

## DIGITAL PARTIALS INVENTED HERE

We've applied Sensable's 18 years of expertise in 3D modeling and virtual touch technology to mastering the complexities of producing exceptional fits in partial frameworks and full contour crowns and bridges. And, we've got the patents – and the patients – to prove it.

## TOOLS OF THE TRADE

Intellifit provides an interface that's natural and intuitive, even fun, that helps lab technicians be more accurate and productive. Unlike some CAD/CAM systems, Intellifit doesn't automate technicians out of the process. Instead it enhances their skills by adding the human touch to technology.

## Automatic with Overdrive

We know the key to productivity is intelligent automation, like using touch-enabled bite registration and contact guides. We also know that you'll want to make fast changes, your way. With Intellifit, you get the best of both worlds.

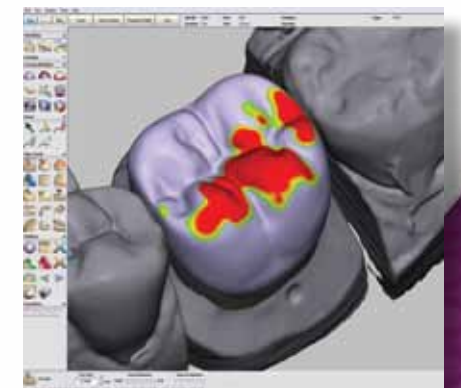
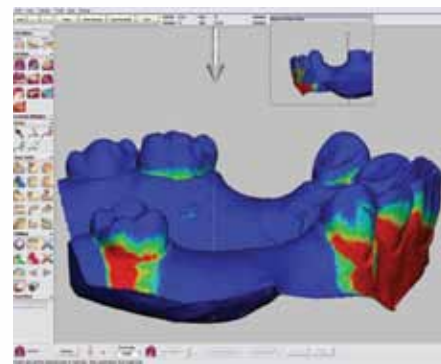
## You Have to Touch It to Believe It

With Intellifit's TE CAD/CAM software, you can work digitally while keeping the manual dexterity and sense of touch you're accustomed to.



## Voxels Are Faster & Better

Unlike surface modelers, Intellifit's unique voxel technology delivers unparalleled speed and flexibility, including superior digital survey and block out without artifacts.



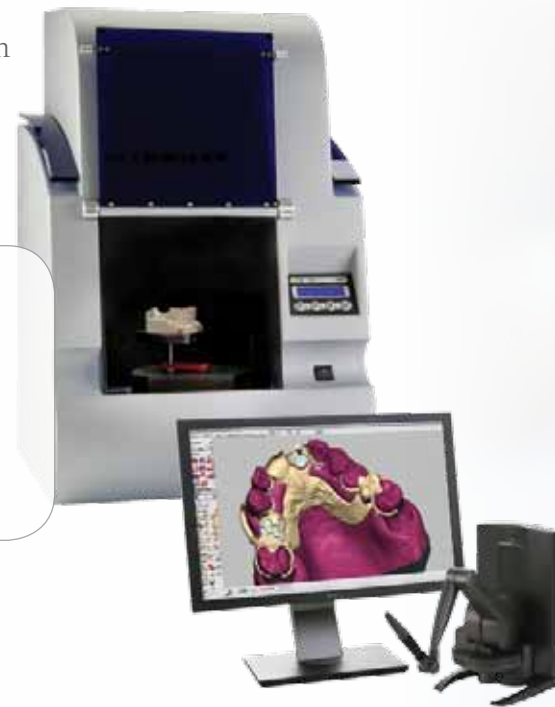
# INTELLIGENT SOFTWARE & SYSTEM INTEGRATION

Optimized for precise, consistent results.

We want your experience with Intellifit to be exceptional – every step of the way. We understand that creating great fitting dental restorations requires knowledge, skill and careful management of hundreds of details. That's why we go the extra mile to ensure that everything works just the way it's supposed to. From specialized scanning software, to design preferences, to case management and automated best practices, to built-in adjustments based on the fabrication methods and materials you plan to use, Sensable's got you covered. And help, if you need it, is only one phone call away.

## FIT MATTERS

Intellifit's integrated system components and optimized software ensure great fitting parts with consistent quality. And that makes for satisfied doctors and patients.



- Best-of-breed components with industry standard interfaces
- Seamless integration for optimized results
- Tested and field-proven

- Integrated case management
- Automated best practices
- Data exchange with popular lab management systems

- Fast and powerful digital design
- Step-by-step workflows
- Digital tools that work like you do

- 3D resin patterns for casting or pressing
- 3D printing for biocompatible try-ins
- Milling

- On-site installation & training
- Ongoing web-based training
- Online user forum

- One call for end-to-end support
- Remote software installation and diagnostics
- Software upgrades
- Preventative maintenance
- Renewable annual support

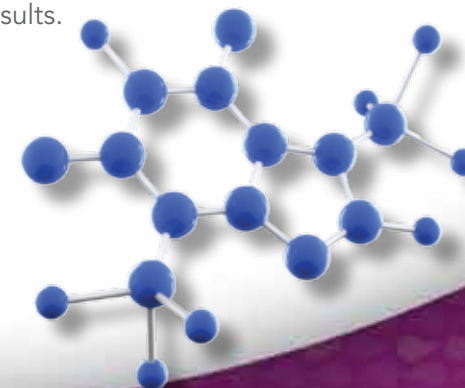
## 3D Printing and Milling

Print resin patterns to use for casting metal, injecting plastics or pressing ceramic. Intellifit's software also provides automatic tool compensation and output for industry standard milling machines.



## Your Materials, Our Intellifit Solution

Our software comes with a PhD in material science. It automatically adjusts your digital designs to compensate for materials and fabrication processes – right down to the vendor-specific differences in alloys, investments, resins, plastics and ceramics – to ensure great fitting results.



## X-treme Support

When it comes to meeting your lab's needs, nobody beats Sensable's support. One call does it all. No finger pointing, just fast reliable help when you need it. At Sensable, we treat customers like family.



# A SOLUTION FOR YOUR LAB

Intellifit gives you more choices.

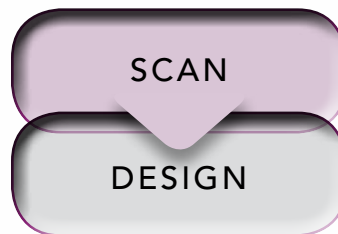
With Intellifit, you decide what level of design control you need. Choose the fully integrated system, from scan to production. Or, just purchase the scan/design system and outsource fabrication to any lab around the world that is a Sensable Authorized Production Center. And, if you'd like to just scan your master models and outsource the rest of the process, Sensable has a solution for that, too. No matter what you choose, you get a system that's tailored to meet the needs of your lab.

Outsource design and fabrication



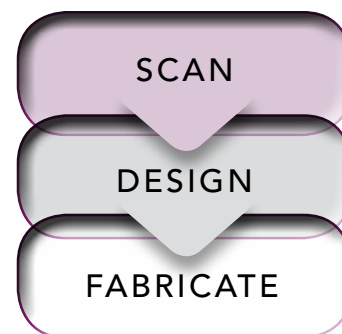
Ideal for labs that want to outsource design and production. It's easy to add design and fabrication capabilities later.

Outsource fabrication



Perfect for labs that want to maintain design control and outsource production. Upgrade to add fabrication capabilities when desired.

Complete in-house control. Provide services to other labs.



The best solution for labs that want to maintain total control from scan to production. You can also choose to become a Sensable Authorized Production Center that provides services to other labs.

## The Sensable Choice

As the leading provider of Intellifit – the first and #1 selling system for partials and more, 3D touch-enabled organic design solutions and haptic devices, Sensable is fully committed to your success. In business since 1993, Sensable has over 9,000 systems used by dental labs, medical institutions and Fortune 500 companies, as well as leading universities and research facilities worldwide. We've brought the same unparalleled design freedom and TE CAD/CAM technology that has revolutionized product design and medical modeling to dental labs of all sizes. Find out why so many dental labs are now choosing the Intellifit Digital Restoration System from Sensable Dental. It's the smart choice for smart dental labs.



  
sensable  
DENTAL more productivity  
A division of Sensable.

Sensable Dental  
181 Ballardvale Street  
Wilmington, MA 01887  
Main 781.937.8315  
U.S. toll free 855.872.7255  
www.sensabledental.com

© 2010-11 Sensable Technologies, Inc. All rights reserved. Intellifit, Sensable and Sensable Technologies, Inc. are trademarks or registered trademarks of Sensable Technologies, Inc. Other brand and product names are trademarks of their respective holders.

Product specifications are subject to change without notice.

Sensable does not guarantee the fit of restorations produced using non-supported components and peripherals.